

Wellspring

MANOR & SPA

Corporate Experiences at Wellspring



SPRING 2025

www.wellspringmanor.com | info@wellspringmanor.com | (301) 288-6002

Corporate Experiences at Wellspring

SPRING 2025



About Wellspring Manor & Spa

An intimate, yet spacious 5-suite destination, Wellspring Manor & Spa is the ultimate in luxury, tranquility and service.

Nestled on a 7.35 acre estate in the heart of Prince George's County, Maryland, Wellspring is an oasis of peace, quiet, and renewal created for corporate guests seeking a luxurious, relaxing, wellness-infused experience.

From chef prepared meals to our on-site spa, to our entertainment/meeting center to our curated guest room packages, you'll feel like you've been transported to another time and space.

Welcome to Wellspring!

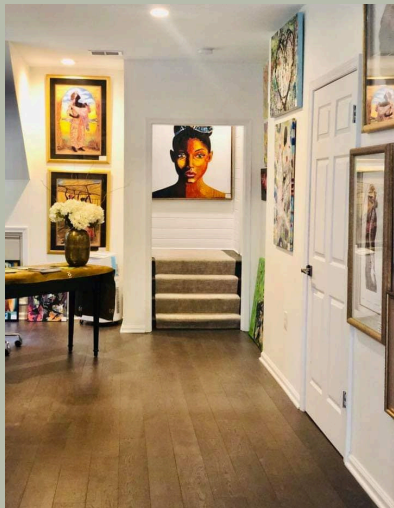
Kevin & Lisa Alexander, Owners/Hosts

Corporate Experiences at Wellspring

SPRING 2025



Corporate meetings and events at Wellspring Manor & Spa are both refreshing and inspiring. Reconnect with colleagues and reinvigorate your senses at our private oasis of natural beauty, wellness and first-rate service.



Package One

MEETING FUNDAMENTALS

4 hours of Coverage
Continental Breakfast or
Charcuterie Board Afternoon Break
4-hour Beverage Service*
Complimentary Wi-fi

\$189/pp
(up to 10 participants)

Package Two

MEETING ESSENTIALS

8 Hours of Coverage
Hot Breakfast
Deli/Hot Lunch Buffet
8 Hour Beverage Service
PM Break Station
Complimentary Easels
Complimentary Wi-fi
Complimentary Parking

\$3,995/day
24 participants maximum

Package Three

PREMIUM MEETINGS

8 Hours of Coverage
Full Breakfast
Deli or Hot Lunch Buffet
All Day Beverage Service
Complimentary Easels
Complimentary Wi-fi
Overnight Accommodations
for Up to 5 Executives & Multi-
course Breakfast

\$6,595/day
up to 40 participants

Prices are subject to change and do not include 6% sales tax on food and beverages, a 18% service charge and other fee based charges. Food and beverage pricing is subject to change without notice.

| www.wellspringmanor.com | info@wellspringmanor.com | (301) 288-6002



Menu Offerings

Continental Breakfast

Selection of Freshly Squeezed and Chilled Fruit Juices
Sliced Fresh Seasonal Fruits and Seasonal Berries
Bakery Basket with Butter, Honey and Preserves
Assorted Bagels with Assorted, Whipped Cream Cheeses
Freshly Brewed Coffee, Decaffeinated Coffee and Deluxe Teas
Continuous Coffee, Decaffeinated Coffee and Tea Service

Breakfast Enhancements

Turkey Bacon, Egg and Cheese on Croissant - \$15 Per Person
Boiled Eggs & Smoked Salmon Platter with Garnishments - \$19 Per Person
Blueberry Pancakes with Whipped Butter, Chicken Sausage & Mixed Berry
Compote - Whipped Butter and Vermont Maple Syrup - \$14 Per Person

Morning Breaks

Selection of Whole Fresh Fruit in Season - \$3 Per Piece
Assorted Individual Organic Yogurts - \$5
Assorted Breakfast Bars - \$36 Per Dozen

Prices are subject to change and do not include 6% sales tax on food and beverages, a 18% service charge and other fee based charges. Food and beverage options are customizable and include vegan, vegetarian and gluten free options. Pricing is subject to change without notice.



Menu Offerings

Buffet Lunch

Grilled Vegetable Antipasto Salad

Tomato Feta Pasta Salad

Classic Caesar Salad

Deli Lunch

Assorted Deli Meats - Imported Turkey, Roast Beef, Vegetable

Cheese Selections - Sharp Cheddar, Provolone, American, Swiss

Deli Condiments - Crisp Lettuce, Sliced Tomatoes, Kosher Dill, Spicy Mustard,

Mayonnaise

Breads - Sliced Country, Sourdough, Rye Bread, Wheat, Croissant

Hot Lunch

Heirloom Tomato Salad

Garden Green Salad

Grilled Chicken Breast with Jumbo Asparagus, Pan-Roasted Mushrooms Seasonal

Squash Bloomsdale Spinach

or

Herbs Seared Atlantic Salmon Haricot Vert, Lemon Dill Sauce, Fingerling Potatoes

Baskets of Assorted Breads and Rolls

Prices are subject to change and do not include 6% sales tax on food and beverages, a 18% service charge and other fee based charges. Food and beverage options are customizable and include vegan, vegetarian and gluten free options.

Pricing is subject to change without notice.

AUDIO VISUAL & TECHNICAL ENHANCEMENTS

Included:

LCD Projector Package

85" Boardroom Monitor (16x9) with Adapter & Complimentary Internet Access

Audio Visual Technical Enhancements

Flipchart with Markers.....	\$35.00 Each
PC Audio.....	\$45.00 Each
Laser Pointer	\$35.00 Each
Power Strip	\$25.00 Each
Extension Cord	\$20.00 Each
Podium Rental	\$129.00 Each

